

The JTC Summit

Space for Lease

SOLE AGENT

Property highlight

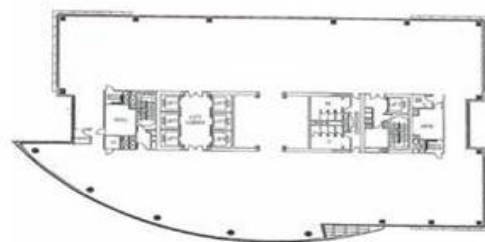
JTC Summit is a 31-storey excellent quality office building strategically located in the upcoming Jurong Lake District which will become the largest commercial node and regional centre outside the Central Business District.

Distinctive features

- 5 mins sheltered walk to Jurong East MRT and in close proximity to wide variety of F&B and retail amenities.
- Column-free layout and raised flooring for efficient and flexible spatial planning.
- Commands unblocked scenic views of Jurong Lake.
- In-house café, auditorium and gym available for tenant's use.



Units	Approx. Floor Area (sq ft)	Asking Gross Rent (\$/sq ft /mth)	Condition	Availability
Retail				
02-00	5,210	TBA	Fitted (Gym)	TBA
Office				
03-11	6,135	\$5.11	Bare except partial fittings in 03-11 & 04-00	Immediate
04-00	4,844*			Immediate
13-04/05	7,340*			Immediate
25-06	2,390*			Immediate
30-02	1,345			Immediate; Under Consideration



*Units enjoying Lobby Frontage

For more information, please contact:

Jocelyn Low

CEA reg no: R0499451
 Manager
 Direct: +65 6393 2356
 Mobile: +65 9622 5177
 jocelyn.low@etcsea.com

Goh Hui Jie

CEA reg no: R046221J
 Senior Manager
 Direct: +65 6393 2353
 Mobile: +65 9006 0354
 huijie.goh@etcsea.com

For further info, please contact: Commercial & Retail 6293 3228