

# The JTC Summit

## Office Space for Lease

### SOLE AGENT

#### Property highlight

JTC Summit is a 31-storey excellent quality office building strategically located in the upcoming Jurong Lake District which will become the largest commercial node and regional centre outside the Central Business District.

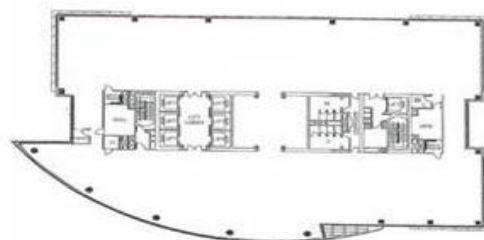
#### Distinctive features

- 5 mins sheltered walk to Jurong East MRT and in close proximity to wide variety of F&B and retail amenities.
- Column-free layout and raised flooring for efficient and flexible spatial planning.
- Commands unblocked scenic views of Jurong Lake.
- In-house café, auditorium and gym available for tenant's use.



Units	Approx. Floor Area (sq ft)	Asking Gross Rent (\$/sq ft /mth)	Condition	Availability
#13-04/05	7,340*	\$5.11	Bare	Immediate
#25-05/06	4,434*			1 Sept 2018
#27-03	2,303			Immediate
#29-03	2,303			Immediate
#30-03	2,017			Immediate

\*Unit enjoying Lobby Frontage



#### For more information, please contact:

##### Jocelyn Low

CEA reg no: R049945I  
 Assistant Manager  
 Direct: +65 6393 2356  
 Mobile: +65 9622 5177  
 jocelyn.low@etcsea.com

##### Goh Hui Jie

CEA reg no: R046221J  
 Senior Manager  
 Direct: +65 6393 2353  
 Mobile: +65 9006 0354  
 huijie.goh@etcsea.com

For further info, please contact: Commercial & Retail 6293 3228