

# The JTC Summit

## Office Space for Lease

### SOLE AGENT

#### Property Highlight

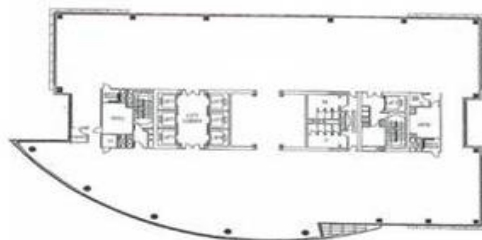
JTC Summit is a 31-storey excellent quality office building strategically located in the upcoming Jurong Lake District which will become the largest commercial node and regional centre outside the Central Business District.

#### Distinctive Features

- 5 mins sheltered walk to Jurong East MRT and in close proximity to wide variety of F&B and retail amenities.
- Next to upcoming Singapore & KL High-Speed Rail terminus
- Column-free layout and raised flooring for efficient and flexible spatial planning.
- Commands unblocked scenic views of Jurong Lake
- In-house café, auditorium and gym available for tenant's use



Units	Approx Floor Area (sq ft)	Posted Gross Rent (\$/sq ft /mth)	Condition	Availability
#13-04/05	7,340 (Lobby frontage)	\$4.46	Bare	Immediate
#24-01	2,454 (Lobby frontage)		Bare	Immediate
#26-03	2,303		Fully Fitted	Immediate
#27-03	2,303		Bare	Immediate
#29-03	2,303		Bare	Immediate
#30-03	2,017		Bare	Immediate



**For more information, please contact:**

#### Jocelyn Low

CEA Registration No : R049945I

Assistant Manager

Direct : +65 6393 2356

Mobile : +65 9622 5177

jocelyn.low@etcsea.com

#### Goh Hui Jie

CEA Registration No : R046221J

Senior Manager

Direct : +65 6393 2353

Mobile : +65 9006 0354

huijie.goh@etcsea.com

For further info, please contact : Commercial & Retail 6293 3228